

MOORSELE FLY-IN & OPEN-DOOR 2026

SATURDAY 04 & SUNDAY 05 JULI 09:00 – 20:00loc



VISITING AIRCRAFT INFO



Arrival & Departure timings

Arrival & Departure	10:00LT – 13:00LT 14:00LT – 14:15LT
Departure ONLY!	15:00LT – 15:15LT 16:00LT – 16:15LT 17:00LT – 17:15LT
Arrival & Departure	18:00LT – 20:00LT (airfield closes @20:00LT!)

MOORSELE FLY-IN TURBI ARRIVAL PROCEDURE

- PRIOR TO ENTERING TRAJ ESTABLISH TWO WAY COMMUNICATIONS WITH ATS (MOORSELE RADIO ON 120.505 MHZ);
- ON ATS REQUEST JOIN INTERSECTION 'TURBI' @ 1.200FT MSL OR ANOTHER ATS ASSIGNED ALTITUDE AND ENTER A RIGHT HAND HOLDING

WITH RUNWAY 22 IN USE:

- FOLLOWING ATS INPUT, LEAVE TURBI INTERSECTION ON TRACK 190 DESCENDING TO 1.000FT MSL AFTER 2NM TURN ON TRACK 220 FOR RUNWAY 22 FINALS;

WITH RUNWAY 04 IN USE:

- FOLLOWING ATS INPUT, LEAVE TURBI INTERSECTION ON TRACK 190 DESCENDING TO 1.000FT MSL AFTER 1NM TURN ON TRACK 220 FOR RUNWAY 04 DOWNWIND;
- FOLLOW ATS INFO TOWARDS BASE AND FINAL TURNS



MOORSELE FLY-IN

DADDI ARRIVAL PROCEDURE

- PRIOR TO ENTERING TRAE ESTABLISH TWO WAY COMMUNICATIONS WITH ATS (MOORSELE RADIO ON 120.505 MH);
- ON ATS REQUEST JOIN INTERSECTION 'DADDI' @ 1.200FT MSL OR ANOTHER ATS ASSIGNED ALTITUDE AND ENTER A RIGHT HAND HOLDING

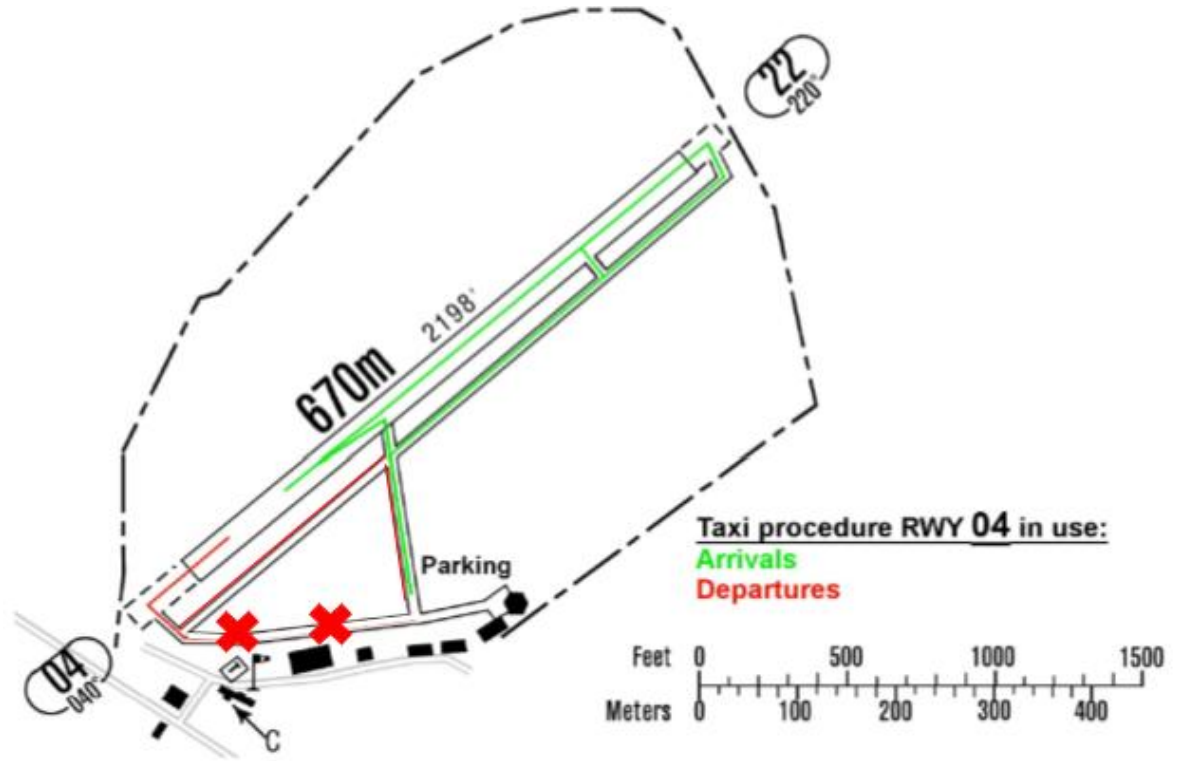
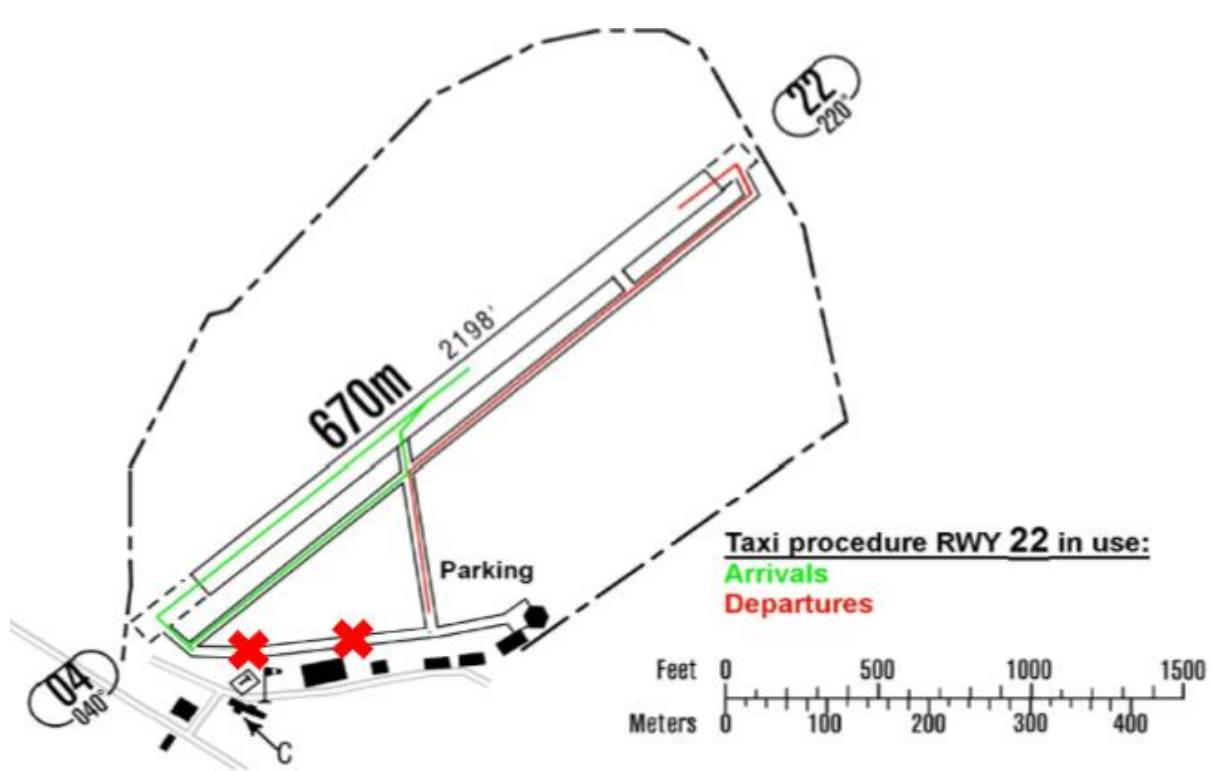
WITH RUNWAY 22 IN USE:

- FOLLOWING ATS INPUT, LEAVE 'DADDI' INTERSECTION ON TRACK 135° DESCENDING TO 1.000FT MSL AFTER 1NM PASSING THE SOUTHERN EDGE OF DADIZELE TOWN TURN ON TRACK 040° FOR RUNWAY 22 DOWNWIND;

WITH RUNWAY 04 IN USE:

- FOLLOWING ATS INPUT, LEAVE 'DADDI' INTERSECTION ON TRACK 135° DESCENDING TO 1.000FT MSL AFTER 1,5 NM PASSING 'FLORALUX' TURN ON TRACK 040° ON RUNWAY 04 FINALS;
- FOLLOW ATS INFO TOWARDS BASE AND FINAL TURNS





PARKING SPOTS



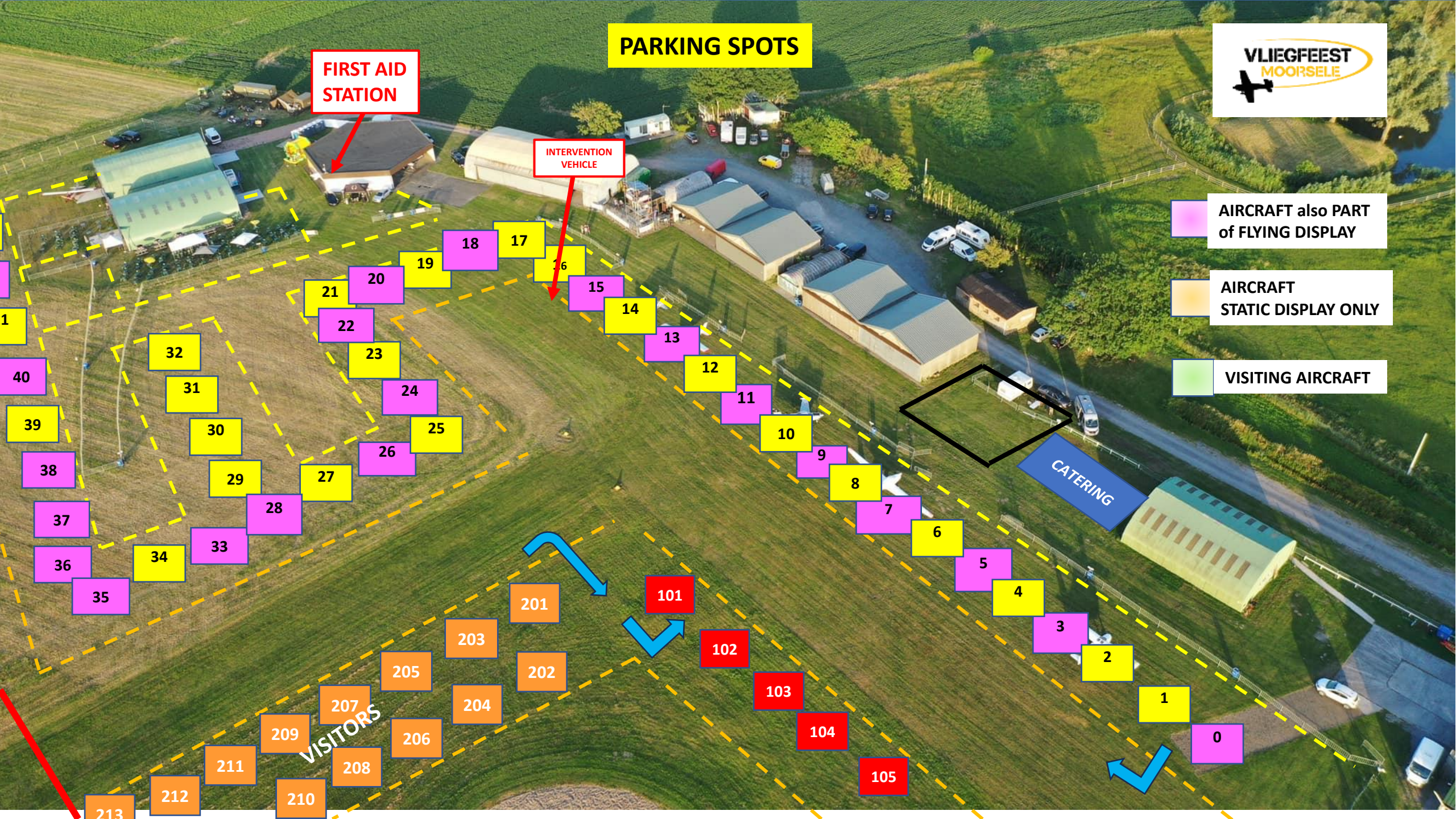
FIRST AID STATION

INTERVENTION VEHICLE

AIRCRAFT also PART of FLYING DISPLAY

AIRCRAFT STATIC DISPLAY ONLY

VISITING AIRCRAFT



1

40

39

38

37

36

35

213

32

31

30

29

28

27

26

25

24

23

22

33

34

35

36

37

38

39

40

21

20

30

29

28

27

26

25

24

23

22

21

20

29

28

27

26

25

24

23

22

21

20

19

28

27

26

25

24

23

22

21

20

19

18

27

26

25

24

23

22

21

20

19

18

17

26

25

24

23

22

21

20

19

18

17

16

25

24

23

22

21

20

19

18

17

16

15

24

23

22

21

20

19

18

17

16

15

14

23

22

21

20

19

18

17

16

15

14

13

22

21

20

19

18

17

16

15

14

13

12

21

20

19

18

17

16

15

14

13

12

11

20

19

18

17

16

15

14

13

12

11

10

19

18

17

16

15

14

13

12

11

10

9

18

17

16

15

14

13

12

11

10

9

8

17

16

15

14

13

12

11

10

9

8

7

16

15

14

13

12

11

10

9

8

7

6

15

14

13

12

11

10

9

8

7

6

5

14

13

12

11

10

9

8

7

6

5

4

13

12

11

10

9

8

7

6

5

4

3

12

11

10

9

8

7

6

5

4

3

2

11

10

9

8

7

6

5

4

3

2

1

10

9

8

7

6

5

4

3

2

1

0

9

8

7

6

5

4

3

2

1

0

8

7

6

5

4

3

2

1

0

7

6

5

4

3

2

1

0

6

5

4

3

2

1

0

5

4

3

2

1

0

4

3

2

1

0

3

2

1

0

2

1

0

1

0

0

0

0

0

0

0

0

0

0

0

0

0

0

0

0

0

0

0

0

0

0

0

0

0

0

0

0

0

0

0

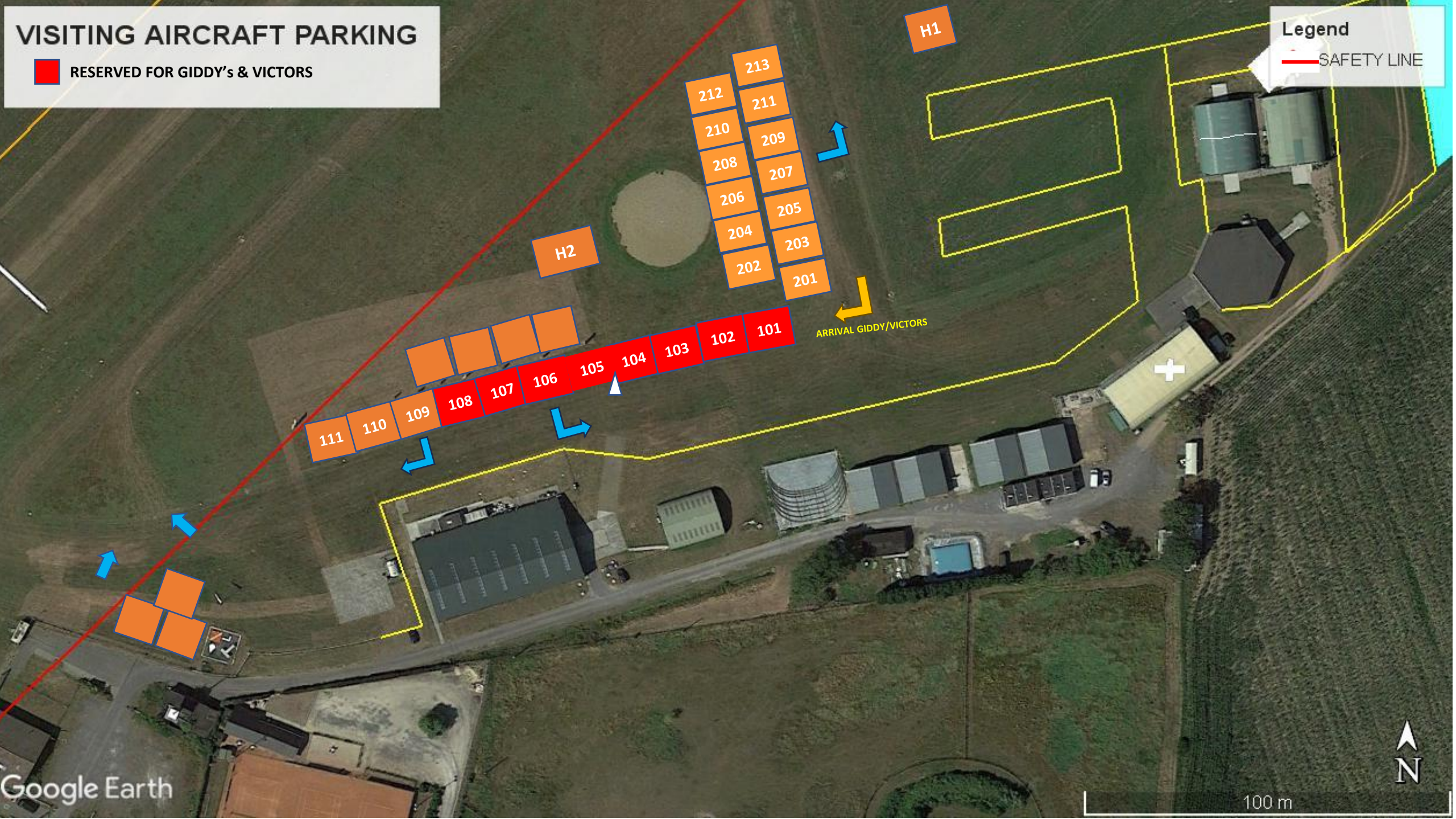
0

VISITING AIRCRAFT PARKING

 RESERVED FOR GIDDY's & VICTORS

Legend

 SAFETY LINE



APPLICABLE MARSHALLER SIGNS

No person shall guide an aircraft unless trained, qualified and approved by the appropriate authority to carry out the functions of a signalman. (ICAO Rules of the Air)

TAXI-IN AND PARKING SIGNS



COME FORWARD



TURN YOUR LEFT



TURN YOUR RIGHT



FOLLOW NEXT MARSHALLER



SLOW DOWN



STOP



BRAKES ON



CUT ENGINE



CHOCKS POSITIONED

APPLICABLE MARSHALLER SIGNS

START-UP AND TAXI-OUT SIGNS



STAND-BY POSITION



START-ENGINE



WHEEL CHOCKS REMOVED



BRAKES-OFF



COME FORWARD



TURN YOUR RIGHT



MOVE TO NEXT MARSHALLER



YES or OK



NEGATIVE or NO